

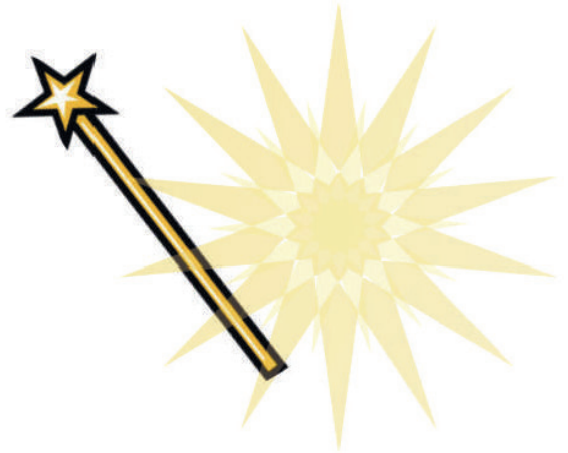
GET YOUR  
FREE LESSON

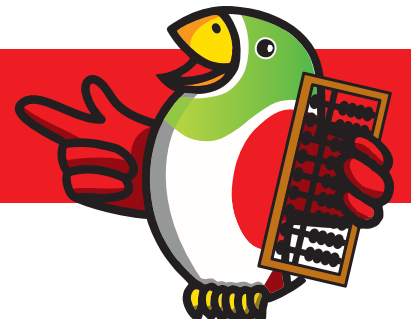


The magic square.

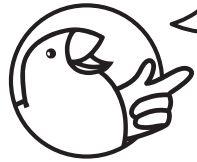
In this magic square the sum of each row of digits (horizontally, vertically and diagonally) is always the same. Fill in the gaps in this magic square, knowing that the sum of each row should be equal to 111

35	1			19	24
	32	7		23	
31		2	22		20
8	28			10	15
30		34	12	14	
4	36		13		11



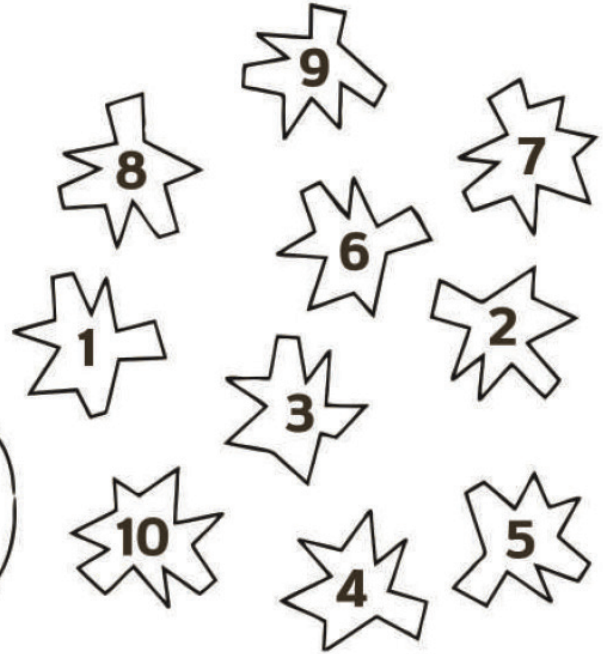
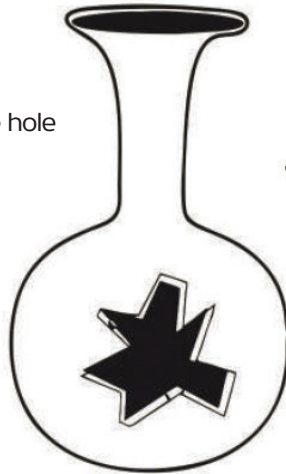


GET YOUR  
FREE LESSON



Find the missing  
fragment

Which of these  
fragments fit the hole  
in the vase?



Numbers and stars.

Each star should be surrounded by  
numbers from 1 to 8.

	1		4		5	7
4	★	3	★	1	★	
	8		5		2	
4	★		★	8	★	15
1		7	1	4	7	
6	★	2	★		★	2
	3			5	8	